

STANDARD TREE PLANTING COMPRISING:
 ch - CHERRY Prunus Beni-Yukata
 sb - SILVER BIRCH Betula pendula
 h - HORNBEAM Carpinus betula 'fastigiata'
 r - ROWAN Sorbus aucuparia
 fm - FIELD MAPLE Acer campestre
 ALL 200/250, FEATHERED, 2-2.5m HT.
 SPACED AS INDICATED, RABBIT GUARDED & STAKED

HEDGE PLANTING COMPRISING:
 mn - MIXED NATIVE HEDGE - 50% HAWTHORN Crataegus monogyna,
 20% HAZEL Corylus avellana, 10% FIELD MAPLE Acer campestre,
 10% HOLLY Ilex aquifolium, 10% DOG ROSE Rosa canina
 ALL 40/60 1+1 TRANSPLANTS, 450mm SPACED IN 2No.
 STAGGERED ROWS 450mm APART WITH RABBIT GUARDS.
 SEE ALSO NOTE REF S.E. BOUNDARY

SHRUB PLANTING COMPRISING:
 b - BARBERRY - Berberis thunbergii 'Atropurea' 30/40 C3
 hz - HAZEL - Corylus avellana 40/60 C2
 WITH RABBIT GUARDS.

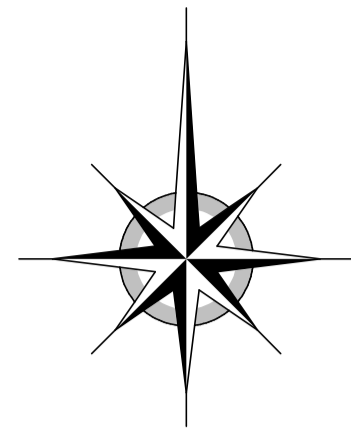
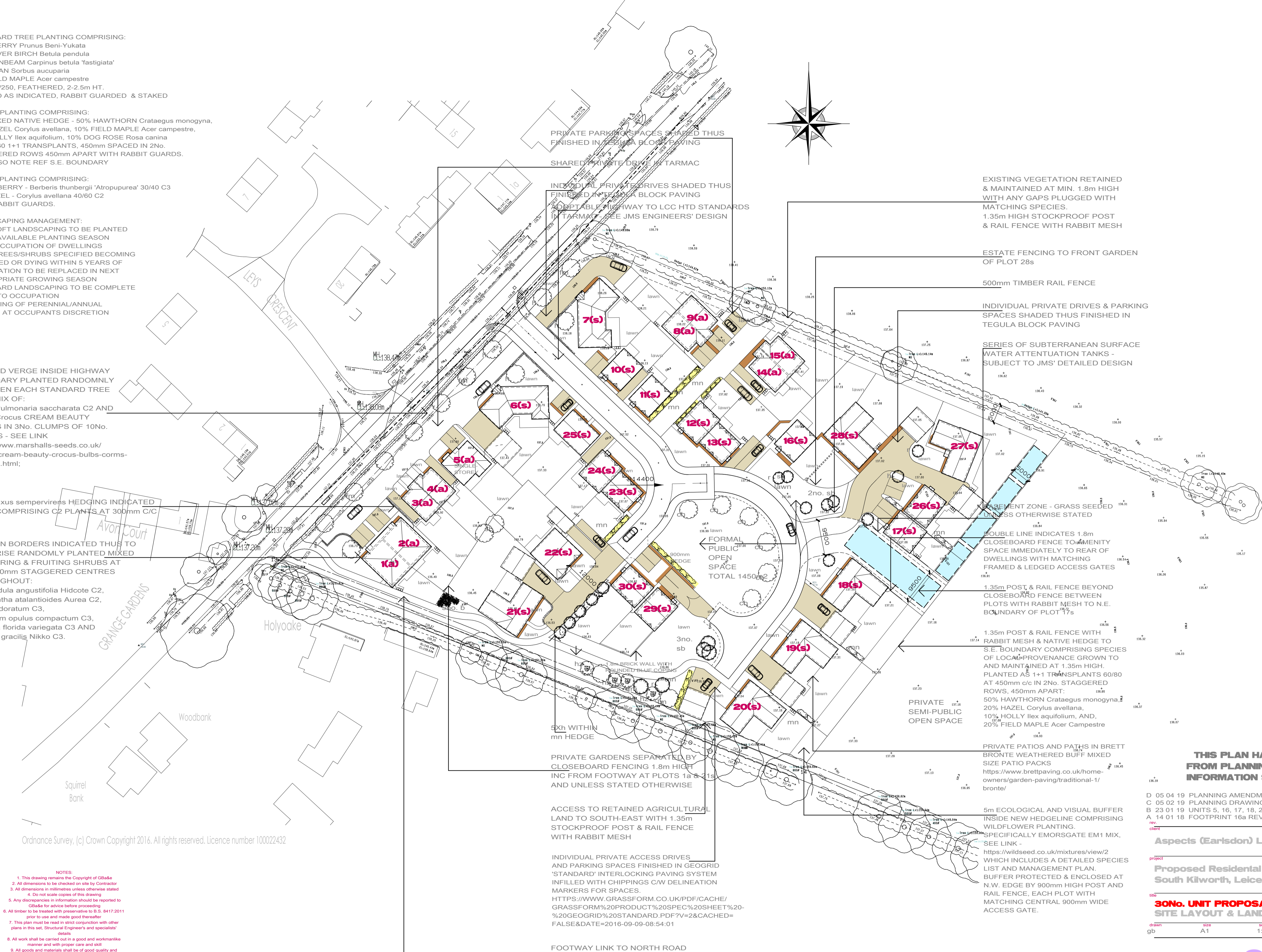
LANDSCAPING MANAGEMENT:
 - ALL SOFT LANDSCAPING TO BE PLANTED
 IN 1ST AVAILABLE PLANTING SEASON
 POST-OCCUPATION OF DWELLINGS
 - ANY TREES/SHRUBS SPECIFIED BECOMING
 DISEASED OR DYING WITHIN 5 YEARS OF
 OCCUPATION TO BE REPLACED IN NEXT
 APPROPRIATE GROWING SEASON
 - ALL HARD LANDSCAPING TO BE COMPLETE
 PRIOR TO OCCUPATION
 - PLANTING OF PERENNIAL/ANNUAL
 PLANTS AT OCCUPANTS DISCRETION

LAWNED VERGE INSIDE HIGHWAY
 BOUNDARY PLANTED RANDOMLY
 BETWEEN EACH STANDARD TREE
 WITH MIX OF:
 10No. Pulmonaria saccharata C2 AND
 30No. Crocus CREAM BEAUTY
 CORMS IN 3No. CLUMPS OF 10No.
 PLANTS - SEE LINK
<https://www.marshalls-seeds.co.uk/crocus-cream-beauty-crocus-bulbs-corms-pid3237.html>;

BOX Buxus sempervirens HEDGING INDICATED
 THUS COMPRISING C2 PLANTS AT 300mm C/C

GARDEN BORDERS INDICATED THUS TO
 COMPRISE RANDOMLY PLANTED MIXED
 FLOWERING & FRUITING SHRUBS AT
 MIN. 600mm STAGGERED CENTRES
 THROUGHOUT:
 Lanvandula angustifolia Hidcote C2,
 Pyracantha atalantioides Aurea C2,
 Ribes odoratum C3,
 Viburnum opulus compactum C3,
 Weigela florida variegata C3 AND
 Deutzia gracilis Nikko C3.

Ordnance Survey, (c) Crown Copyright 2016. All rights reserved. Licence number 100022432



EXISTING VEGETATION RETAINED & MAINTAINED AT MIN. 1.8m HIGH WITH ANY GAPS PLUGGED WITH MATCHING SPECIES.
 1.35m HIGH STOCKPROOF POST & RAIL FENCE WITH RABBIT MESH

ESTATE FENCING TO FRONT GARDEN OF PLOT 28s
 500mm TIMBER RAIL FENCE

INDIVIDUAL PRIVATE DRIVES & PARKING SPACES SHADED THUS FINISHED IN TEGULA BLOCK PAVING

SERIES OF SUBTERRANEAN SURFACE WATER ATTENUATION TANKS - SUBJECT TO JMS' DETAILED DESIGN

PAVEMENT ZONE - GRASS SEEDED UNLESS OTHERWISE STATED

DOUBLE LINE INDICATES 1.8m CLOSEBOARD FENCE TO AMENITY SPACE IMMEDIATELY TO REAR OF DWELLINGS WITH MATCHING FRAMED & LEDGED ACCESS GATES

1.35m POST & RAIL FENCE BEYOND CLOSEBOARD FENCE BETWEEN PLOTS WITH RABBIT MESH TO N.E. BOUNDARY OF PLOT 17s

1.35m POST & RAIL FENCE WITH RABBIT MESH & NATIVE HEDGE TO S.E. BOUNDARY COMPRISING SPECIES OF LOCAL PROVENANCE GROWN TO AND MAINTAINED AT 1.35m HIGH. PLANTED AS 1+1 TRANSPLANTS 60/80 AT 450mm c/c IN 2No. STAGGERED ROWS, 450mm APART:
 50% HAWTHORN Crataegus monogyna,
 20% HAZEL Corylus avellana,
 10% HOLLY Ilex aquifolium, AND,
 20% FIELD MAPLE Acer Campestre

PRIVATE PATIOS AND PATHS IN BRETT BRONTE WEATHERED BUFF MIXED SIZE PATIO PACKS
[https://www.brettpaving.co.uk/home-owners/garden-paving/traditional-1/bronte/](https://www.brettpaving.co.uk/home-owners/garden-paving/traditional-1/)

PRIVATE SEMI-PUBLIC OPEN SPACE

5m ECOLOGICAL AND VISUAL BUFFER INSIDE NEW HEDGELINE COMPRISING WILDFLOWER PLANTING. SPECIFICALLY EMORSGATE EM1 MIX, SEE LINK -
<https://wildseed.co.uk/mixtures/view/2> WHICH INCLUDES A DETAILED SPECIES LIST AND MANAGEMENT PLAN. BUFFER PROTECTED & ENCLOSED AT N.W. EDGE BY 900mm HIGH POST AND RAIL FENCE, EACH PLOT WITH MATCHING CENTRAL 900mm WIDE ACCESS GATE.

THIS PLAN HAS BEEN PREPARED FROM PLANNING & TOPOGRAPHICAL INFORMATION SUPPLIED BY OTHERS

D 05 04 19 PLANNING AMENDMENTS
 C 05 02 19 PLANNING DRAWING
 B 23 01 19 UNITS 5, 16, 17, 18, 26, 27 & 28 AMENDED
 A 14 01 18 FOOTPRINT 16a REVISED

Aspects (Earlston) Ltd
 PROJECT
Proposed Residential Development off North Road, South Kilworth, Leicestershire

ISSUE
30No. UNIT PROPOSAL SITE LAYOUT & LANDSCAPING

drawn	size	scale	ref	rev
gb	A1	1:500	4535/FINAL PHASE/05	D



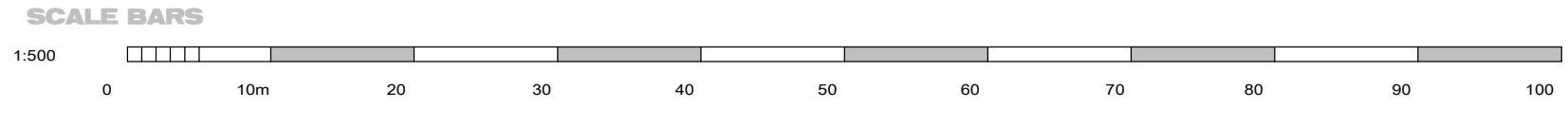
DEVELOPMENT CONSULTANCY ARCHITECTURE CONTRACT ADMINISTRATION PROTECTED SPECIES SURVEYS



Chartered Institute of Architectural Technologists

GBa&E is a trading style of George Burton ARCHITECTURE & ECOLOGY LTD

Ryton Organic Gardens Wolston Lane Ryton-on-Dunsmore Warwickshire CV8 3LG
 02476 21772 admin@gbae.co.uk www.gbae.co.uk



- NOTES:
- This drawing remains the Copyright of GBa&E
 - All dimensions to be checked on site by Contractor
 - All dimensions in millimetres unless otherwise stated
 - Do not scale copies of this drawing
 - Any discrepancies in information should be reported to GBa&E for advice before proceeding
 - All timber to be treated with preservative to B.S. 8417:2011 prior to use and made good thereafter
 - This plan must be read in strict conjunction with other plans in this set, Structural Engineer's and specialists' details
 - All work shall be carried out in a good and workmanlike manner and with proper care and skill
 - All goods and materials shall be of good quality and reasonably fit for their intended purpose
 - PROTECTED SPECIES:
 - Bats, birds, great-crested newts and certain other species are protected by Law. It is therefore essential that, if any such species are discovered, during, or before, the construction process the works are suspended and the local office of Natural England contacted for advice
 - All proprietary products to be fixed/installed in strict accordance with manufacturer's recommended methods